

## OFFICER BASIN HERITAGE CLEARANCE SURVEY COMPLETED FOR PHASE 2 DRILLING

Reward Minerals Ltd (Reward, or the Company) is pleased to announce that it has received Heritage Clearance for Phase 2 drilling at its Officer Basin Potash Project.

The Heritage survey was conducted in accordance with the standards and requirements of Western Desert Lands Aboriginal Corporation (WDLAC), the trustee corporation for Martu native title.

Eleven (11) new drill sites and associated access tracks have been Cleared, covering an area of approximately 135km<sup>2</sup>.

Phase 1 drilling (OB001 – OB005) executed during 2020, provided excellent flows of Potash-rich groundwater from shallow aquifers in its Officer Basin exploration area (see ASX Release 25 January 2021). Phase 2 drilling is planned to the north and west of Phase 1 holes.

The Survey will ensure Reward's activities avoid Registered Sites and WDLAC identified exclusion areas. Some modifications to access corridors have been made as a result of the survey however the modifications do not affect the exploration scope or program.

The Clearance allows Reward to continue exploration at its Officer Basin Project, where activities resume at previously Cleared Areas.

It is anticipated that at least 3 holes from the Phase 2 drill program will be completed during the current field season.

### Phase 1 Drill Program Completion

OB001 – OB005 have been drilled along Seismic Line N83-01 over a distance of 11.3km, striking NE-SW across a potential palaeovalley system containing potash-rich brine. The depths of brine encountered in these holes vary between 20m and 200m in depth.

OB005 began earlier in September but has experienced some technical delays. Modifications to the drilling technique have been applied to overcome these issues. Drilling is expected to recommence mid-October.

See Figure 1 for Clearance and Drilling details at Officer Basin.

7 OCTOBER 2021

ASX CODE: RWD

#### DIRECTORS

Colin McCavana  
*Chairman*

Rod Della Vedova  
*Non-Executive Director*

Michael Ruane  
*Executive Director*

#### MANAGEMENT

Bianca Taveira  
*Company Secretary*

#### HEAD OFFICE

Reward Minerals Ltd  
159 Stirling Highway  
Nedlands WA 6009

PO Box 1104  
Nedlands WA 6909

T: 08 9386 4699

E: [admin@rewardminerals.com](mailto:admin@rewardminerals.com)

W: [www.rewardminerals.com](http://www.rewardminerals.com)

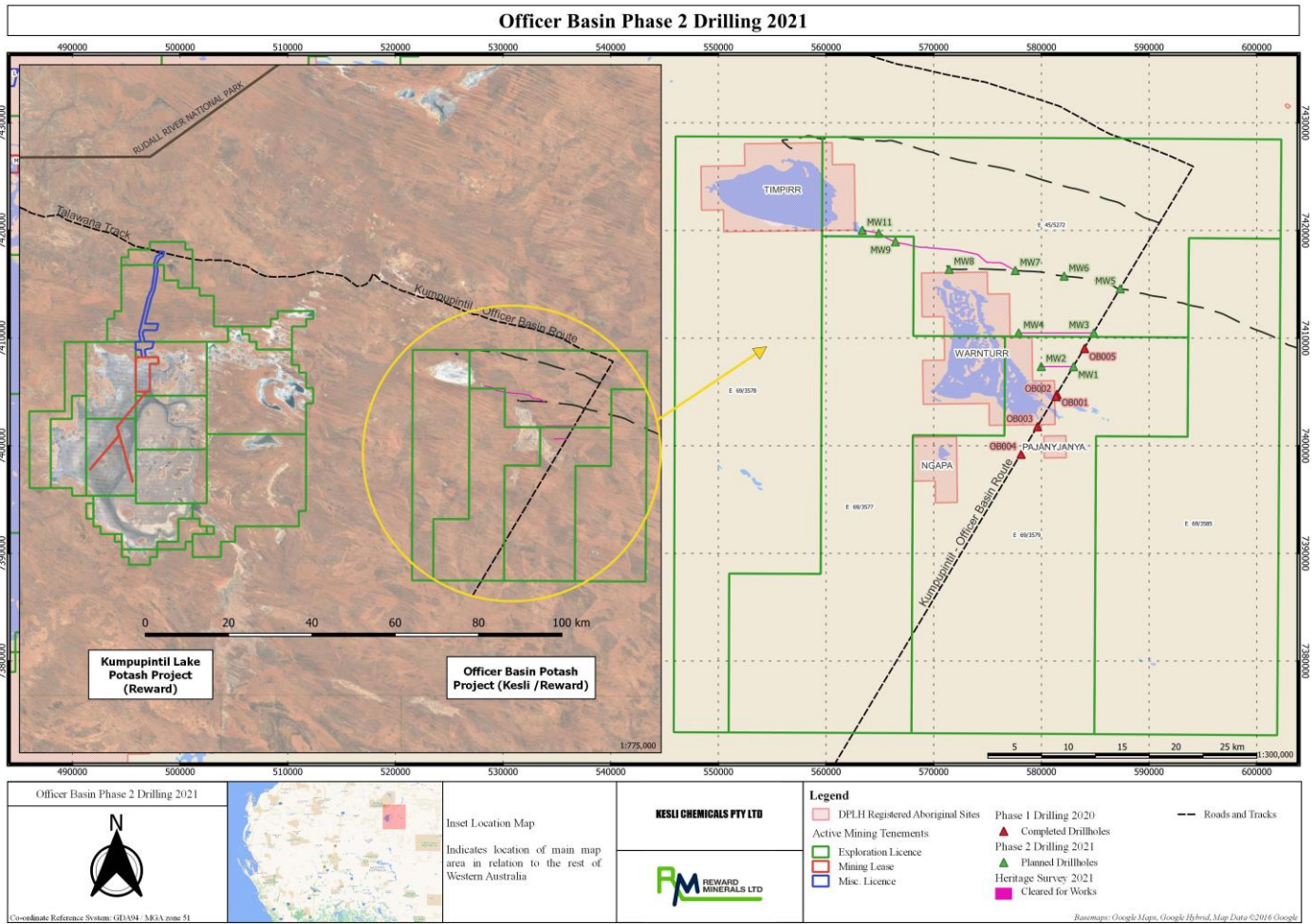


Figure 1. Map showing Phase 1 and Phase 2 drillholes at Officer Basin, located just 100km east of Reward's JORC-defined SOP Resource of Kumpupintil Lake.

Note: Officer Basin Tenements are Registered under Kesli Chemicals Pty Ltd, which holds 100% beneficial interest in its Tenements on behalf of Reward Minerals Ltd.

**Brine Assessment**

Assessment of brine composition and inflow data is complicated by the variable nature of the aquifer system. In some locations, fresh or near-fresh water is encountered close to surface. Groundwater salinity increases with depth and hence precise salinities and SOP content are difficult to determine.

The casing-off of drillholes is required to prevent groundwater inflowing from upper to lower aquifer horizons. Even then, accurate assessment of groundwater salinity and SOP content is problematic.

Downhole sampling and test pumping is continuing. Data will be provided as it becomes available.

For further information please contact:

**Michael Ruane**

**Director**

*Authorised for release by the Board of Reward Minerals Ltd*